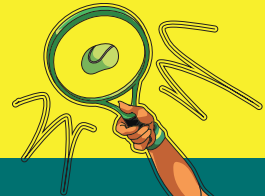


Paralympics
Australia



Colour In Lizzie

Lizzie is the mascot of the Australian Paralympic Team.

Lizzie is tenacious, proud and limitless in what she can achieve. This means she is a determined goal setter and fierce competitor.

She's proud to be the mascot of the Australian Paralympic Team and always strives to inspire and excite the athletes.

Her favourite food is bugs – the bigger they are, the louder they crunch! Her favourite colour is red because it is the colour of the Australian land. She hates bad frill days but loves wheelchair rugby – the sport of true frill seekers!

A great mate to all, Lizzie is funny, friendly and very cheeky. Turn over and make Lizzie shine by colouring her in.

